



DUBIX FREIGHT

LTD

Your Freight Partner



Dubix Freight Ltd Company Profile

Dubix Freight Ltd operates as a leading Non-Vessel Operating Common Carrier (NVOCC) and freight forwarder based in Nairobi, Kenya, specializing in end-to-end logistics from origin to destination. The company provides comprehensive services, including inland transportation tracking, document preparation, warehousing, cargo space booking, freight negotiation, consolidation, insurance, and claims filing. With a global network spanning over 350 independent freight forwarders in more than 100 countries, Dubix Freight ensures cost-effective, secure, and timely shipments worldwide.



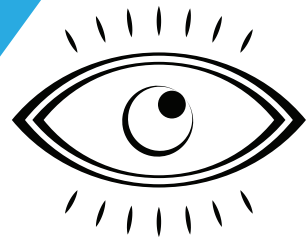


Company Overview

Dubix Freight Ltd is located at Lunga Lunga Square, 3rd Floor, Room No. 319, Industrial Area, Nairobi, Kenya (P.O. Box 15271-00400).

Established as a key player in the global logistics sector, the firm handles air, ocean, and multimodal cargo, including high-value projects and cross-trade shipments. Its teams bring extensive experience in complex logistics, leveraging partnerships with major shipping lines for optimal routes, schedules, and rates across five continents.





Our Mission

To provide seamless, door-to-door logistics solutions that bridge the gap between global manufacturers and local destinations. We strive to simplify the complexities of international trade by handling every facet of the supply chain, from specialized documentation and cargo insurance to real-time tracking, ensuring our clients' shipments are handled with optimal care and efficiency.



Our Vision

To be the world's most reliable NVOCC and freight forwarding partner, known for our ability to navigate the most challenging project cargo and provide a safe, secure, and timely service across all five continents. We aim to leverage our network of over 350 global partners to reduce costs and offer tailor-made logistics programs for every business, regardless of size or location.



Core Values

- **Reliability:** We pride ourselves on an excellent track record of delivering on time and providing 24/7 VIP support to resolve issues quickly.
- **Expertise:** Our teams possess high-level experience in handling complex cross-trade shipments and multi-modal logistics solutions.
- **Transparency:** We provide our customers with access to real-time information and status updates throughout the entire shipping process.
- **Flexibility:** From small express air shipments to large-scale sea freight projects, we offer customized solutions tailored to specific budgets and timeframes.
- **Integrity:** We treat every shipment with individual care and attention, acting as an integral part of our clients' own export departments.
- **Innovation:** We utilize the latest software and specialized equipment to manage non-standard cargo and optimize the movement of goods.



Core Services

Dubix Freight offers a comprehensive range of logistics services focused on Sea, Air, Road, Warehousing, Consolidation and deconsolidation, Project Cargo and Supply Chain Management.

Sea Freight

Dubix Freight provides sea freight services through partnerships with major global shipping companies, offering regular schedules at principal ports across five continents. Services include various routes, departure dates, competitive costing, and transit times, with FCL and LCL options for imports and exports. The global network of over 350 freight forwarders in 100+ countries ensures cost reduction, security, and timely delivery for regions like Asia, South America, Europe, and Africa.



Air Freight

Air freight services cover expert international forwarding for small express shipments to large-scale projects, using reliable airlines and advanced tracking software. Door-to-door handling includes real-time status updates, optimal care for cargo, and tailored solutions based on size, timeframe, and budget. Experienced staff manage all facets, resolving issues efficiently via a worldwide partner network.



Project Freight

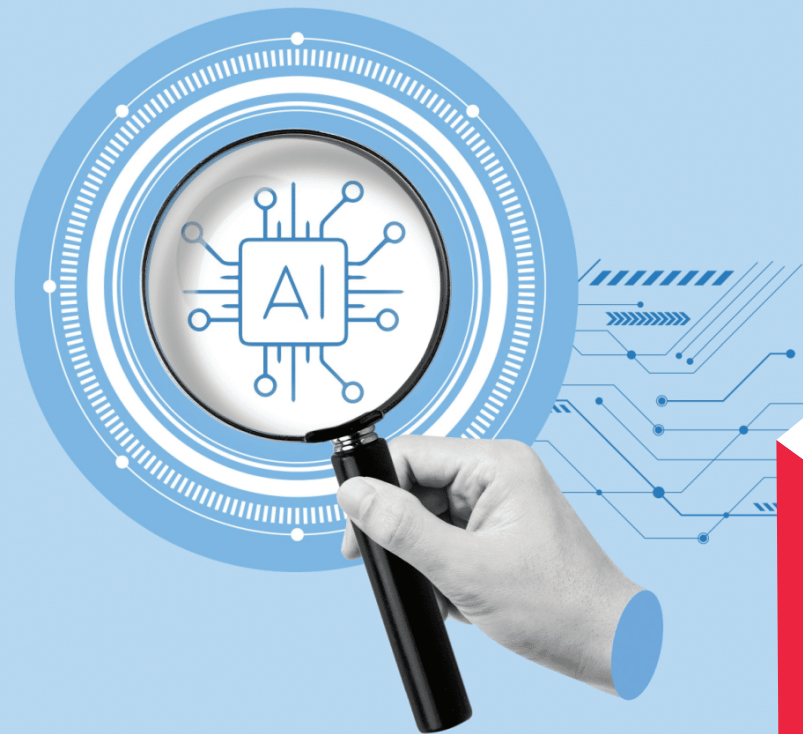
Specialized project cargo handling addresses oversized or heavy items beyond standard containers, requiring multi-modal solutions and specialist equipment. Key considerations include exceptional dimensions/weight, risk factors, critical analysis, specialized transit organization, loading/unloading procedures, onboard arrangements, and contingency plans. The team draws on a proven portfolio of global logistics projects for safe, detailed execution.



Road Haulage

Road haulage features a fleet of sliding skeletal, taut liners, and flatbeds, complemented by reliable sub-contractors, to ensure fast port-to-door delivery of all container types including 20ft, 40ft, 45ft, reefers, high cubes, flat racks, and open tops. A dedicated operations team oversees and tracks every stage of the journey to guarantee efficiency, reliability, and real-time visibility for customers.

AI-Optimized Road Haulage



Dubix Freight is advancing to the next generation of freight transportation by embedding real-time AI optimization into its road haulage operations to enhance route reliability, safety, and emissions efficiency. By integrating real-time data analytics with machine learning, Dubix Freight enables smarter decision-making on the road, reducing delays, minimizing emissions, and proactively addressing safety risks across its haulage network.

The company applies AI-driven optimization solutions to plan and manage freight transportation routes dynamically, enabling rapid adjustment to traffic, weather, and operational disruptions. Through advanced predictive and prescriptive analytics, Dubix Freight identifies and prevents potential delays before they occur, significantly improving freight reliability and increasing on-time delivery performance for customers.

We deploy Machine Learning algorithms for real time transportation route optimization and fleet management, reducing fuel consumption and improving asset utilization. Integrating RUL forecasts with maintenance shop scheduling to increase Mean Time Between Failures (MTBF) and reduce unplanned roadside failures.

In addition, AI-powered route and load optimization help reduce freight-related emissions by selecting more efficient paths, maximizing load utilization, and supporting better driver performance, aligning Dubix Freight road services with modern sustainability and ESG expectations.



Warehousing

Warehousing services provide consolidation/de-consolidation, secure dry storage for non-hazardous cargo, racked/open floor space, and flexible short/long-term options. Bonded facilities allow deferral of customs duties, eliminating the need for client-owned storage.

Consolidation & Deconsolidation

Dubix Freight Ltd provides specialized consolidation and deconsolidation services that enable clients to move cargo cost-effectively through shared-container solutions while maintaining high levels of security and visibility. By combining multiple less-than-container load (LCL) shipments into optimized full-container loads (FCL), Dubix reduces freight costs, improves container utilization, and streamlines transit times for both imports and exports across key global trade lanes.

At destination, shipments are professionally deconsolidated in secure facilities, with cargo sorted, documented, and dispatched for final-mile delivery in line with each customer's requirements. The service is fully integrated with warehousing, customs clearance, and inland transportation, allowing seamless end to end handling from origin pickup and cargo space booking through to delivery, insurance coordination, and claims support where required.





Supply Chain Management

Full supply chain oversight manages the movement and storage of raw materials/finished goods from origin to consumption via air, sea, and road. Includes door-to-door collection/freight/overseas warehousing/delivery, reliable customs clearance, real-time tracking, and 24/7 VIP customer service.



Additional Services

Core supporting services encompass inland transportation tracking, preparation of shipping/export documents, cargo space booking, freight charge negotiation, freight consolidation, cargo insurance, and filing of insurance claims. These integrate seamlessly across all offerings for end-to-end logistics solutions.



Why Choose Dubix Freight Ltd?

1. Global Reach, Local Expertise: With associations in over 100 countries and a network of 350+ independent forwarders, we combine global scale with local knowledge.
2. Versatility: We handle all cargo types, including reefer, high cube, flat rack, and open-top containers.
3. Efficiency: Reliable customs clearance and a choice between Full Container Load (FCL) and Less than Container Load (LCL) options.
4. 24/7 Support: We provide VIP customer service available 24/7 to handle instant inquiries and resolve issues quickly.
5. Proven Track Record: Our teams are industry-recognized for handling high-value project cargo with a hands-on, detail-oriented approach.





Contact Us

Our team is ready to provide 24/7 VIP customer service for your instant inquiries and real-time shipment status updates.

Send enquiries to:
info@dubixfreight.com
0707729239